



Every One a  
Leader



Relationship  
Is  
Everything



## Remarkable You

Dr. Bruce Lipton -  
Cellular Biologist

Dr. William Tiller -  
Professor Emeritus of  
Material Science and  
Engineering at  
Stanford



## Dr. Lipton & Dr. Tiller

- † “Human beings have been designed as the most powerful solution generators on the planet.”
- † “Who we are and how we think significantly influences the world we live and work in.”
- † We are all equally powerful, equally equipped in our creative ability to shape the world around us - home and work.



## Programed for Survival

The brain has a natural proclivity for negativity rather than 'positivity'.



## Train Your Brain

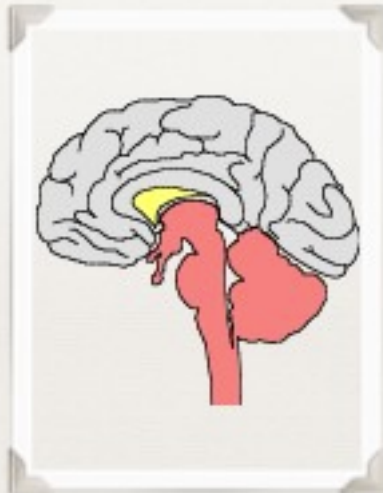
✓ Set a Goal



**R**eticular

**A**ctivating

**S**ystem



## Stuff Happens

1. Get frustrated
2. Ignore the problem
3. Try to fix the problem

## Frustration



- ✦ Focused on the negative stuff that is going on
- ✦ Where your attention goes, your energy flows
- ✦ What you focus on magnifies or grows
- ✦ It breaks flow

## Ignore the Problem



- ✦ Maybe it will go away...
- ✦ Or maybe it doesn't really exist...
- ✦ After all, "I don't see any problem"
- ✦ What problem?

## Fix Things



- ✦ Attack the problem like a whirlwind
- ✦ Focus on fixing it
- ✦ Look for ways to prevent it from happening again

## The Road Less Traveled

- ✦ Focus on something 'beyond' the problem.
- ✦ Look beyond the wall!



## The High Road

- ✦ Turn your problem into a project.
- ✦ Create a vision that makes the problem obsolete
- ✦ Ask yourself, "What can I do to transform the situation?"

## Ask

- ✦ When you ask, the universe conspires to send to support you.
- ✦ Sends you answers
- ✦ Synchronistic events
- ✦ Unexpected opportunities

# Every One a Leader

- ✦ We don't have to stand up front.
- ✦ Each of us can lead from where we are.
- ✦ Look for something that can be improved
- ✦ Initiate action



# The Greatest Kanji Master in the World



# Thank You For Being Who You Are

